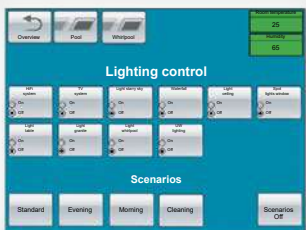


dinotec NET+

The All-rounder



dinotec make model
FiberDOME Europe 1800
AF= 2,54 m³
Q_v= 76,2 m³/ h at 30 m/ h
Filter pump:
Q_v= 76,2 m³/ h at 30 m/ h
Q₀= 152,4 m³/ h at 60 m/ h



Modern pool and spa management.
more flexibility | more economy | more safety

Simply enjoy the best water!

Control unit

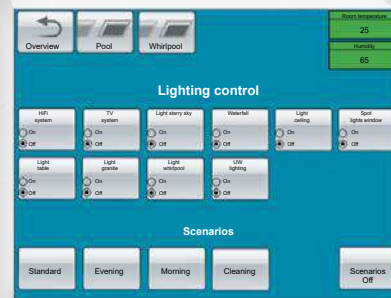
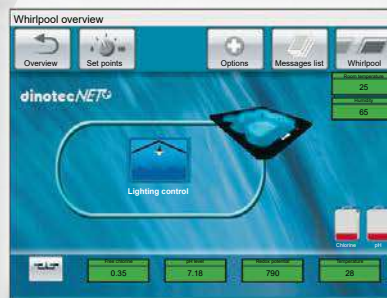
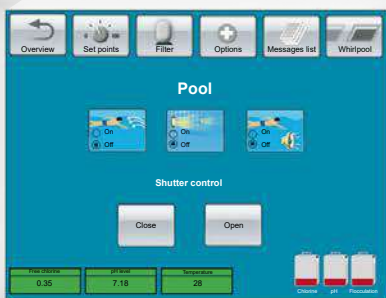
Everything under control

The system housing with 5.7" coloured touch panel is the heart of the dinotecNET+; the entire pool technology is controlled from this center.

All processes and hygiene parameters are clearly and concisely prepared and displayed.



Bus line



Control via touch panel

The control of all technical components and the visualisation of processes is realised by the press of a finger.

If required, a second touch panel can be positioned at various locations, e.g. at the reception, the pool attendant's room or in the immediate vicinity of the pool. The display is also available in other sizes on request.



Modular design

A suitable module is integrated in the system housing for each function; the appropriate field devices are installed in the system.

Compatible devices



Combitrol IMPULS

Actuator for standard 6-way valves (Praher). Assembly directly on valve. Alternative: Besgo automatic backwash valves.



DeviceControl

Control unit for any type of AC consumers up to 2 kW.



MotorControl

Control unit for three-phase motors up to 4 kW with integrated connection for pneumatic buttons.



SpeedControl

Frequency inverter for invariable rotation speed control of three-phase motors up to max. 15 kW.

DEVICES THAT CAN BE



Suitable for use in filters of different sizes in private pools.



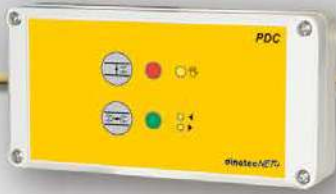
E.g. massage nozzles, sample water pumps, dosage pumps, small UV systems, lighting etc.



E.g. three-phase circulation pumps, attractions or blowers.



E.g. circulation pumps, attractions or blowers.



Pneumatic DriveControl

Controller for pneumatic actuators.



LevelControl 2

Hydrostatic, continuous level measurement for open tanks.



Humidity Temperature Sensor

Sensor for room temperature and humidity. Calculates dew point and dew point deviation.



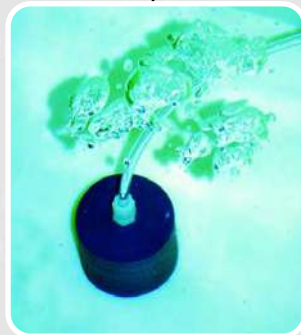
dinodos START LEVEL BUS

Peristaltic pump with wear-free stepper motor drive. With precisely controllable, 0-8.5 l/h dosing range. Measurement of the fluid level in the supply container and display in the dinotecNET+.

C O N N E C T E D



Suitable for all valve drives.



Safe and reliable measurement, also for salt or mineral water.

Safety

In case of failure, all important functions can be switched directly via the devices.

24 h service via dinoRemote

On request, dinotec also provides full-service for maintenance and servicing of systems. All functions are permanently monitored via the Internet. Required corrections are carried out immediately by dinotec.

options



Facility management system

The dinotecNET+ system can be combined with all established facility management systems via standardised interfaces. Central control, no need for additional control elements.



PC/Internet

The entire dinotecNET+ system can be serviced and updated via the Internet.



Water attractions

The modular technology can be extended at any time with planned or existing water attractions.



Future-proof

The modular design allows unlimited expandability. dinotecNET+ simply grows along with new investments, for example in pool technology or attractions.

dinotec know-how

All system components are developed, tested, built and customised by dinotec. The complete organisation of the swimming pool – from planning via consultancy, installation to maintenance – is carried out by skilled staff and partners.



Simply enjoy the best water!

> Ideal hygiene conditions

due to fully automatic control and regulation.

> Simpler

due to easy operation and central .

> More economical operation

due to modern measurement-control technology and precise dosing.

> Expandable and future-proof

due to a flexible, modular design and a broad range of devices for pool technology.

> Individually customisable

to any existing system and to projects of different scopes.

> Can be used worldwide

All modules operate with 24 V DC .

> Cost-efficient planning and installation

Additional switch cabinets and complex cabling are now a thing of the past.

> Low maintenance requirements

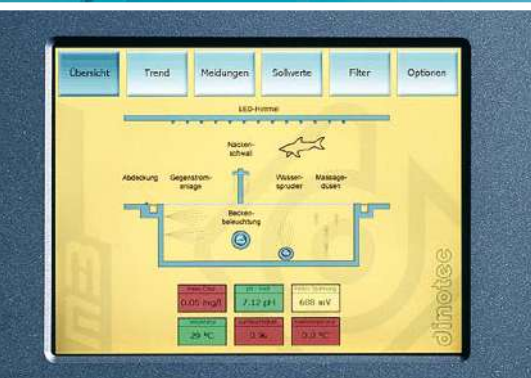
Fewer interfaces.

Remote maintenance and diagnostics via Web and telephone possible.

The All-rounder for an up-to-date control of swimming pools and whirlpools:
more flexibility | more economy | more safety



Show house, Bruchköbel/Germany



Rocco Forte Hotel Villa Kennedy, Frankfurt/Germany





dinotec
Water & Pool Technology



PWT BETTER WATER BETTER LIFE

Κεντρικά γραφεία - Έκθεση

Σπ. Δοντά 12, 11743 Αθήνα

☎ 210 9211600 ☎ 210 9233109 ✉ info@pwt.gr 🌐 iwater.gr • ipool.gr

Τεχνικό τμήμα

Λάδωνος 5, 12132 Αθήνα

☎ 210 5780444 ☎ 210 5762570



ΠΙΣΙΝΕΣ | ΚΟΛΥΜΒΗΤΗΡΙΑ | ΣΥΣΤΗΜΑΤΑ ΕΠΕΞΕΡΓΑΣΙΑΣ ΝΕΡΟΥ

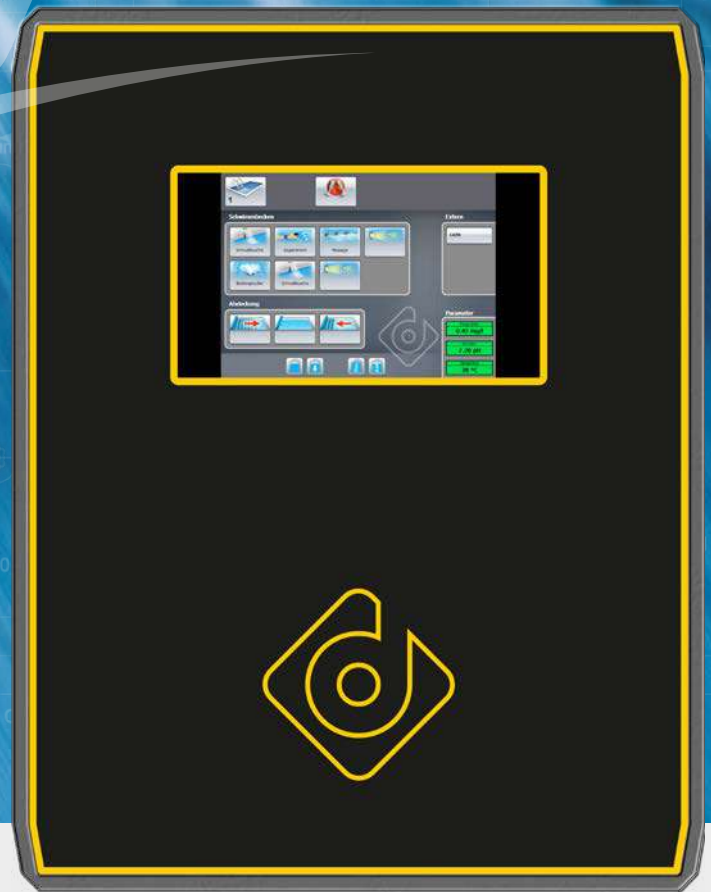
Background photo:
Water photo no. 1
Artist:
Thomas Kuhn

Subject to technical changes. Errors excepted. 01/2020

Simply enjoy the best water!

Fully equipped pool control system,
completely configured.

ready



dinotec *NET+* ready

**More functions, more conveniences,
superior technology.**

Everything included! Features and advantages at a glance



dinoRemote
Secure remote control/maintenance via smartphone, tablet, etc.



Heating: measurement of pool temperature and control of heating circulation pump/3-way valve.



Shock chlorination - triggered via time switch or manually



Party mode: water treatment is carried on also outside the set hours of operation, thereby ensuring an optimum water quality.



Best water quality, measurement and control of all hygiene parameters.



Holiday mode: energy-saving operation. Activation and automatic return to normal operation via calendar feature.



Large colour trend graphs for measuring parameters



Solar temperature control for heating the pool water via solar absorber systems.



Filter control with integrated time switch for filter runtimes and backwash.



Solar temperature control for cooling the pool water over night via solar absorber systems.



Peristaltic dosing pumps, bus controlled, with wear-free stepper motor.



Graphic display, information visible at a glance, intuitive operation.



Peristaltic dosing pumps with integrated container level measurement (in cm). Alarm via system bus.



Dosing time control to prevent uncontrolled dosing.



ECO mode (standby mode/night mode)



Storing of measurement data and setpoint adjustments.



Expandable to meet future requirements.



Connection to PC, routers, printers; direct data transmission via DSL possible.

More individuality, more conveniences: optional features



Second, larger touch screen for (remote) control of your entire system from your indoor pool or any other room.



Surge tank control for pools with overflow gutter. With hydrostatic logging of measured values for level.



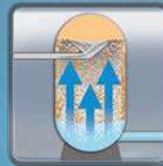
You also own a whirlpool? No problem with the dinotecNET+ ready measuring and control technology for a second pool circulation.



Control of overflow gutter cleaning. Input for key switch.



Control your attractions, such as counter current systems, massage nozzles or lighting with the attraction control for up to three attractions and floodlights up to 600 W total power (only together with second touch screen).



Filter backwash manual, with piston valve or automatic 6-way valve.



Control up to 3 external attractions such as garden lighting, fountains, etc.



Filter pump 230/400V, ECO, frequency converter control.



Connection to a facility management system via Modbus TCP or EIB/KNX



Also available as Watercom version, i.e. space-saving, pre-assembled complete system for water treatment



Make use of flocculation to improve the filtration performance! Flocculant dosing station, bus-controlled, 3 – 3000 ml/h.



Also available as Watercom version, i.e. space-saving, pre-assembled complete system for water treatment

ready

Simply enjoy the best water!



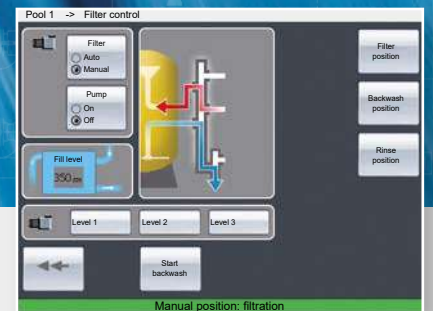
Wired ready for connection and pre-assembled on a plastic wall mounting plate with rapid assembly kit

For outdoor and indoor pools with a volume up to about 150 m³

dinotec bus system



Access for operation and maintenance from anywhere in the world, as if standing right in front of it.



Functions, workflows and settings are clearly and concisely presented.



The colouring of the level indicator allows you to identify the current state at a glance:
Blue means: everything is alright.
Yellow means: Reserve, a refilling is required.
Red means: Warning, container is empty.

Full control over the water quality

"ready" means that you receive a perfectly matched, pre-configured system for control of your swimming pool. Complex system configurations belong to the past.

Due to modern bus technology, the expenses involved in the installation of the dinotecNET+ ready are kept to a minimum. The "intelligent system" is superior to conventional systems in respect of technology, range of functions and modern conveniences.

At the same time, the system provides a maximum scope for individualisation.

The system permits a free choice of the water care method, only the appropriate measurement sets must be connected. In addition, it is possible to further customize the system by means of additional options.

All models include a 7" colour touch screen.

Logical menu structures allow an intuitive operation.

All processes and parameters are clearly and concisely presented.

Bus-controlled peristaltic dosing pumps with wear-free stepper motor are used for an accurate dosing of water care agents.

Technical data:

Mains voltage:	85 – 265 V/AC (48-63 Hz)
Power consumption:	50 VA
Protection class:	IP 65
Dimensions housing (w x h x d):	approx. 500 x 300 x 150 mm
Weight	
(wall mounting plate complete):	up to approx. 18 kg
Permissible ambient temperature:	up to +50°C
	-20°C to +65°C
Permissible humidity:	Max. 90 % at +40 °C (non-condensing)
Storage temperature pH electrode	-5 °C to + 40 °C
Control outputs:	proportional via bus
Operation:	via touch screen
Display:	Colour graphic display
Language:	multilingual
Wall mounting plate:	with rapid assembly device, pre-assembled 690 x 690 mm

Poolcare (active oxygen) measuring and control part (chlorine-free):

Measurement of oxidant:	potentiostatic with Poolcare electrode (3-electrode system)
Measuring range:	0 – 99 mg/l Poolcare
Resolution:	1 mg/l
Control type:	PID
Continuous dosing control:	adjustable
Electrode check:	by means of compensation of the slope (slope control)
Calibration:	manual by measurement of the actual content of Poolcare at the measuring cell outlet or in the pool

Chlorine measuring and control part:

Measurement of oxidant:	potentiostatic with chlorine electrode (3-electrode system)
Measuring range:	0.0 – 4.0 mg/l chlorine
Resolution:	0.01 mg/l
Control type:	PID
Continuous dosing control:	adjustable
Electrode check:	by means of compensation of the slope (slope control)
Calibration:	manual by measurement of the actual content of free chlorine at the measuring cell outlet or in the pool

pH measurement and control:

pH measurement:	via combination electrode with KCL filling
Measuring range:	0 – 14 pH
Resolution:	0.01 pH
pH control direction:	pH raise/pH reduce (switchable)
Continuous dosing control:	adjustable
Temperature compensation	Yes
Slope monitoring:	Yes
Calibration:	manual with calibration solution pH 7.0 and pH 4.0
Electrode check:	by means of a compensation of slope and zero shift, control of slope and zero point

Alarm:	alarm relay (collective alarm) with voltage-free two-way contact
---------------	--

Dosing pump:	dinodos START LEVEL BUS
Pump type:	Peristaltic dosing pump
Motor:	stepper motor, wear-free
Capacity:	max. 8.5 l/h with a counter-pressure of max. 1.5 bar (adjustable 10 - 100 %)

Filter control:	
Time switch:	weekly timer freely adjustable, max. 20 switching times
Backwash:	manual, optionally automatic (with automatic backwash device Combitrol IMPULS)

Temperature control:	
Setting range:	+5°C to +40°C
Switching output (heating):	potential-free two-way contact
Collector sensor:	optional -50 °C to +150 °C
Switching output (solar):	potential-free two-way contact
Priority circuit 'solar':	adjustable via menu



dinotec *NET ready* Watercom

The first compact pool and spa management system worldwide!

- ✓ Completely pre-configured
- ✓ Space-saving
- ✓ Ecological and economical
- ✓ Convenient and expandable



PWT BETTER WATER BETTER LIFE

Κεντρικά γραφεία - Έκθεση

Σπ. Δοντά 12, 11743 Αθήνα

☎ 210 9211600 ☎ 210 9233109 ✉ info@pwt.gr 🌐 iwater.gr • ipool.gr

Τεχνικό τμήμα

Λάδωνος 5, 12132 Αθήνα

☎ 210 5780444 ☎ 210 5762570



ΠΙΣΙΝΕΣ | ΚΟΛΥΜΒΗΘΡΙΑ | ΣΥΣΤΗΜΑΤΑ ΕΠΕΞΕΡΓΑΣΙΑΣ ΝΕΡΟΥ

Background photo:
Water photo no. 1
Artist:
Thomas Kuhn

Subject to technical changes. Errors excepted. 11/2022

a member of



Simply enjoy the best water!